



En

# DIGITAL SELECTOR for automatic doors ETERNA and NEXT





## TABLE OF CONTENTS:

DESCRIPTION	4
INSTALLATION	4
DAY-TO-DAY USE	5
OPENING THE DOOR FROM T-NFC	6
INFORMATION AREA	7
DIAGNOSTIC AREA	7
TECHNICAL AREA	9
1-SET UP	9
2-FUNCTION	11
3-SELECTOR OPTION	12
4-LANGUAGE	13
5-CONNECTION	13
6-PASSWORD	14
7-SERVICE	14

## DESCRIPTION

The T-NFC selector uses the Touch technology for the buttons and features a next-generation, high-contrast display for clearer images.

It is used to interface with the door both during “standard” operation (by the user), and during the installation and adjustment of functions and parameters (by the installer). It provides the same adjustment and management functions as the ET-DSEL digital selector; in addition, it allows to manage the door from a smartphone, thanks to the built-in NFC technology (for information about the door management through the “LabelTools” App, please refer to the specific instructions).

For faster installation and to eliminate the risk of connection errors, the selector is equipped with a special cable (3,5 metres long), with a built-in connector at both ends.

C button, used to type the passwords, to enable the “F2” special functions, to access the input display and for other uses in the technical area. (See the specific chapters)

Door battery:

If it is on, the door is not powered; if it blinks, the battery is depleted or malfunctioning

Special functions activated through the C button

Winter reduced opening function enabled (A button)

Error warning

Alphanumeric text line for miscellaneous uses. (see the specific chapters for each function)

A button, used to type the passwords, to enable the winter reduced opening, to access the information area and for other uses in the technical area. (see the specific chapters)

D button, used to type the passwords, to select the active door number, to access the user passwords and for other uses in the technical area.

Label logo:  
It goes off when a button is pressed

Selected door number (from 1 to 2)

Digital selector battery (for radio model)

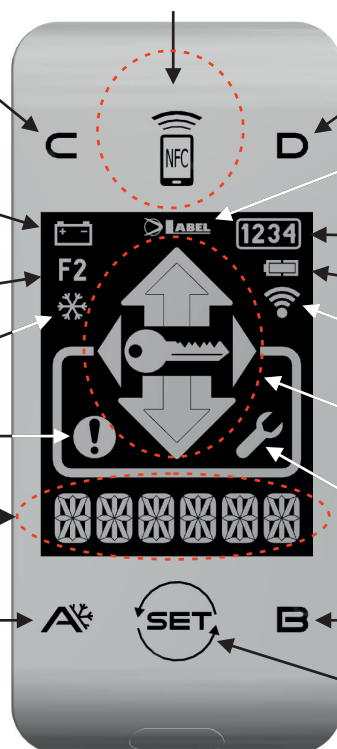
Radio communication field (for radio model)

Operating program icons (see chapter 1.2) or input display (see chapter 2.6)

Maintenance needed warning

B button, used to type the passwords, to control the door opening and for other uses in the technical area (see the specific chapters)

SET button, used to select the operating programs and to access and leave the technical area.



## INSTALLATION

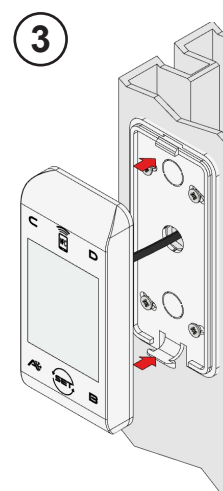
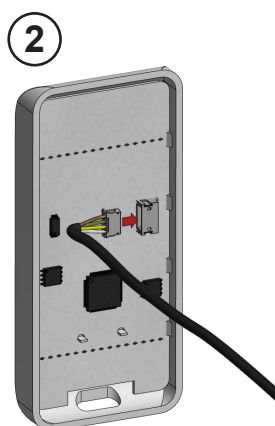
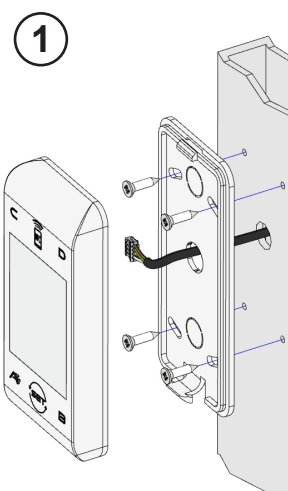
First of all fasten the bottom of the plastic casing to the wall or to the metal structure on which you wish to install the selector, using the supplied screws (1). The supplied cable output shall be installed in this location, on the wall or on the metal structure (if possible centred with respect to the selector casing). Break one of the 3 cable passages on the casing bottom to ensure that the cable can reach the connector located on the board.



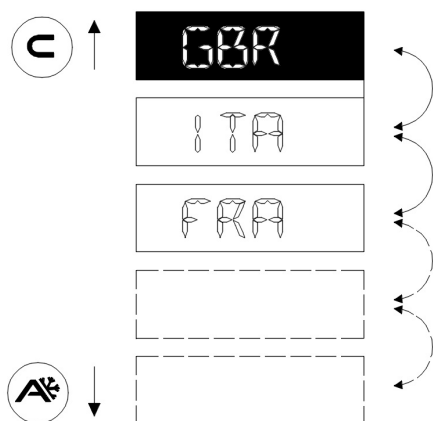
### Important!

*At this stage make sure that the door power supply and the battery are off.*

Connect the cable to the connector located on the electronic board fastened to the plastic casing cover (2), then close the cover onto the previously installed plastic casing (3).



After completing all the electrical connections to the electronic control unit of the automation (ETERNA/NEXT), power the automatic door.



When installed for the first time, the selector shall automatically switch to the language selection menu.

Scroll the available languages using the A (down) or C (up) buttons until you find the desired one. Now press the SET button to confirm and exit this menu.

The language shall be saved and you shall no longer have to select it again. Should you later wish to change the language, access menu 5 from the technical area and repeat the operation.

Once the language has been chosen the selector will automatically start detecting the doors existing on the serial communication line (up to 2); the data will be stored in the processor. During this step the “WAIT” message will be displayed on the alphanumeric character line. Wait for this step to be completed before you touch any button.



### Warning!

*The detection operation shall be automatically performed every time the door is powered, and shall take a few seconds.*

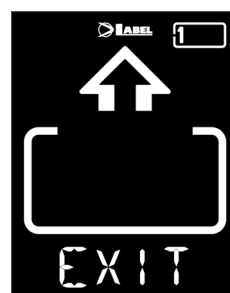
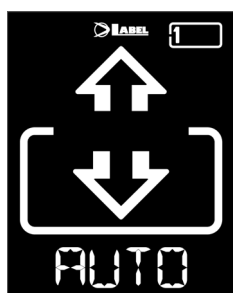
If the operation has been successfully completed the selector will display on the alphanumeric character line the saved operating program for the door, along with its text, in the desired language.

The following paragraph provides a list of the available programs (you can also customise their visibility - see the SELECTOR OPTION chapter).

Should the “NO COMM” message be displayed instead of one of the operating programs, the selector has detected no connected door. In this case check the connection and retry.

## DAY-TO-DAY USE

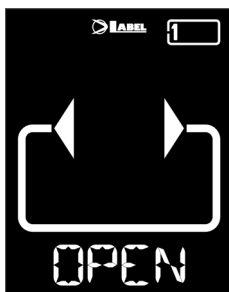
The T-NFC model allows to select 6 different program types for day-to-day use:



**AUTO:** The door opens and closes automatically both ways with all sensors activated

**EXIT:** The door only opens and closes automatically in the exit direction: the sensor connected to the External Radar input is temporarily disabled.

**ENTER:** The door only opens and closes automatically in the entry direction: the sensor connected to the Internal Radar input is temporarily disabled.



- OPEN:** The door opens and remains open until the operating program is changed.
- LOCK:** CLOSED DOOR. The door can only be opened automatically through specific inputs (Open, RX and START). Every time the door is closed, the electric lock, if any, is activated.
- OFF:** The door can be freely moved manually and does not react to the activation of any input. Use this operating program if you wish, for example, clean the glass panels and be sure that the door cannot move if you accidentally activate the opening sensors or any other activation control.

To change an operating program, press the SET button once (unless the PASSWORD LOCK or SLIDE functions are enabled; should that be the case, read the paragraph “USER PASSWORD MANAGEMENT” or “SELECTOR OPTION” before reading the remainder of this chapter) to exit the “Screen Saver “ function and thus activate the selector (the screen brightness shall increase); now press SET again multiple times until selecting the desired operating program.



### Warning!

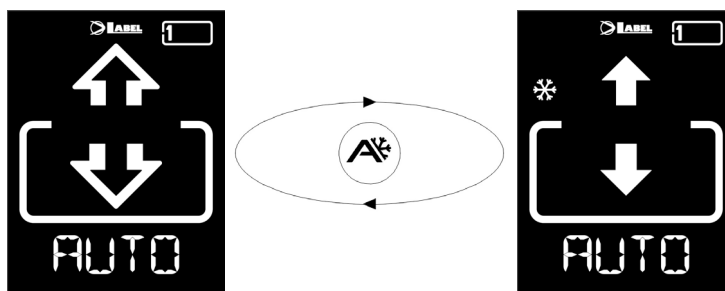
*If no button has been pressed for about 20 seconds, the selector automatically switches to “Screen Saver” mode and decreases the display brightness.*

In addition to the operating program, at any time you can select a reduced opening function (normally used in winter in low temperatures).

To this purpose, press the A button; the corresponding symbol will appear on the display and the flow direction icons (if active) will become narrower.

Press the A button again to return to the standard opening. \*

The figure below shows an example with the AUTO program.



## OPENING THE DOOR FROM T-NFC

Pressing the B button will issue a door opening command; the closing will be automatic, as for the other sensors.

This button can open the door even when the “LOCK” operating program is selected, if the function is enabled (see the Functions table in the Installation Manual of the automation).

INFORMATION AREA

Hold the A button pressed for about 2 seconds to access the information area.  
The display will sequentially show some information and the list of the door errors that have occurred, if any:

C

↑

SERIAL 12345678

PARTIAL 12345678

TOTAL 12345678

REL A 123

REL B 123

INTCODE 123

ER1 00

ER2 00

ER3 00

ER4 00

ER5 00

⌵

A

**SERIAL:** Serial code of the automation electronic control unit

**PARTIAL:** Number of operations performed since the latest maintenance.

**TOTAL:** Number of operations performed since the installation.

**REL A:** Software release of microprocessor A

**REL B:** Software release of microprocessor B

**INTCODE:** Code for internal use

**ER1:** Error event code (latest)

**ER2:** Error event code

**ER3:** Error event code

**ER4:** Error event code

**ER5:** Error event code (earliest)

Scroll the sequence using the A (down) or C (up) buttons.  
Press the SET button to return to the main screen.

DIAGNOSTIC AREA

You can check the state of the door inputs in real time to look for any failures or malfunctions of the sensors and accessories connected to the automatic door.  
To this purpose, hold the C button for about 2 seconds.  
The “INPUT CHECK” message will continuously scroll on the alphanumeric character line.  
From now on the displayed icons shall no longer indicate the operating programs; each of them, instead, shall identify an activated door program. Please refer to the table below for information about the meaning of each icon.

ETERNA AUTOMATION

RAD EX (13)

AUX2 (17)

AUX1 (16)

E.O.1 - E.O.1 (8-9)

STOP/INTERLOCK PRJ38 (14)

OPEN (18)

E.C.1 (5)

LOCK1 (15)

E.O.1 - E.O.1 (8-9)

RAD IN (12)

E.C.2 (6)

START (11) RX B button

NEXT 75 AUTOMATION

RAD EX (1)

AUX2 (4)

AUX1 (5)

E.O.1 - E.O.1 (8-9)

OPEN (3)

E.C.1 (7)

E.O.1 (6)

RAD IN (2)

E.C.2 (6)

RX PS1 B button

Press the SET button to exit the input display and return to the main screen.

## USER PASSWORD MANAGEMENT

The T-NFC selector allows to password-protect the operating program change.

This function is useful if you wish to prevent unauthorised people from setting the door operating program.

To this purpose, you need to enable the user password, by following the procedure described below:

Hold the D button pressed for about 2 seconds.

The "CODE>....." message will be displayed



Type the current password (AAAAA by default), using the A-B-C-D buttons (5 digits)

You shall enter the user password area, from which you can access 3 different selection:

**PASSWORD 1:** To change the primary password code

**PASSWORD 2:** To change the service password code

**PASSWORD ON/OFF:** To enable or disable the primary and service passwords.

Pressing the B button multiple times allows to sequentially switch between the 3 selections.



### Warning!

*The primary password (1) is the only one which grants access to the user password area; as a consequence, it should only be known by the owner of the shop/organisation where the door is installed.*

*The service password (2), instead, is intended for employees or external workers, who can use it to change the door operating programs, but have no way to change or disable both passwords.*

To change password 1, press the A button after selecting PASSWORD 1; the following will be displayed:



Type the new password.

The next screen shall be:



Type the new password again.

Repeat the same sequence to change password 2.

To enable the password, finally, select PASSWORD ON/OFF through the A button, then select ON through the D button (On).

After enabling the password and optionally changing the code, press the SET button to exit this area and return to the main screen.

To disable the user password, select PASSWORD ON/OFF through the A button, then select OFF through the B button (OFF).

Now, after the selector has switched to "Screen Saver" mode, every time the SET button is pressed the



selector will prompt the user to type the password to gain access to the program change.

## TECHNICAL AREA

As mentioned above, through the T-NFC you can operate the door, adjust its functions and its potentiometers, and manage its maintenance.

You can also customise the selector settings.

In order to access the technical area you need to know the 10-digit technical password for the door (which cannot be disabled). The A B C D buttons allow to encode the password.

### Important!



*The technical password is required to ensure that no unauthorised, unqualified people can change any operating parameters, which could result in serious injuries to people. It is important and essential that the installer change the standard password to better protect the automatic door settings.*

Hold the **SET** button pressed for about 2 seconds to enter the technical area.

The display will prompt you to type the technical password:

Type the password; if the code is correct the selector shall enter the technical area and select the first of the 7 menus. To switch between the menus, press the B button multiple times; to enter the menu, press the A button.

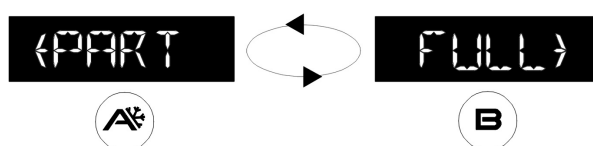
The following are the 7 menus available in the technical area:



### 1-SET UP

This menu allows to set up all the parameters (FULL), or to only set up the door sliding stroke (PART), leaving all other parameters unchanged.

When you enter this menu the following message will be displayed:



Press the A button to launch a stroke setup (PART), or press B to launch a full setup (FULL).

## Full setup (FULL):



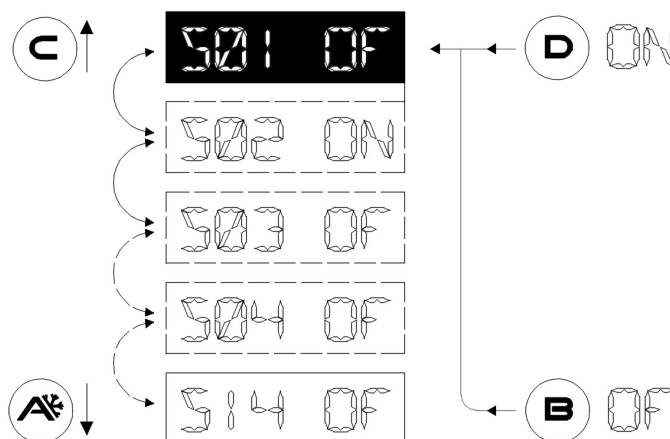
### Important!

*The opening direction is self-learned, provided the leaf is closed when the setup is launched. Remember to close the door before launching the setup.*

The display shows a list of functions to be selected to operate the door.

Press the A button to move to the next function; press the C button to return to the previous one.

To change the selected function state, press the B button to disable it (OFF) or the D button to enable it (ON).



### Warning!

*For information about the meaning of functions S1 to S14, please refer to the initial SETUP paragraph of the automation Installation Manual.*

Once the last function has been reached, the **READY FOR SET UP PRESS A** message is displayed on the alphanumeric character line.



### Important!

*The opening direction is self-learned, provided the leaf is closed when the setup is launched. Remember to close the door before launching the setup.*

Now press the A button to launch the Setup.

A beep shall signal that the setup has started.

The door shall run an opening cycle at reduced speed, then it shall emit a continuous beep for a few seconds to signal that the setup is completed.

From now on the door shall be fully operational.

## Stroke setup (PART):



### Important!

*The opening direction is self-learned, provided the leaf is closed when the setup is launched. Remember to close the door before launching the setup.*

A beep shall signal that the setup has started.

The door shall run an opening cycle at reduced speed, then it shall emit a continuous beep for a few seconds to signal that the setup is completed.

From now on the door shall be fully operational.

## 2-FUNCTION

This menu allows to edit the door operating parameters.

The automation software supports 80 Functions (On/Off) and 50 digital Potentiometers (0-100%), to adapt the automatism to the requirements of each specific installation. In many cases the default values are enough to ensure an appropriate door movement; should you need to edit any of these parameters or to enable the functions, however, enter this menu.



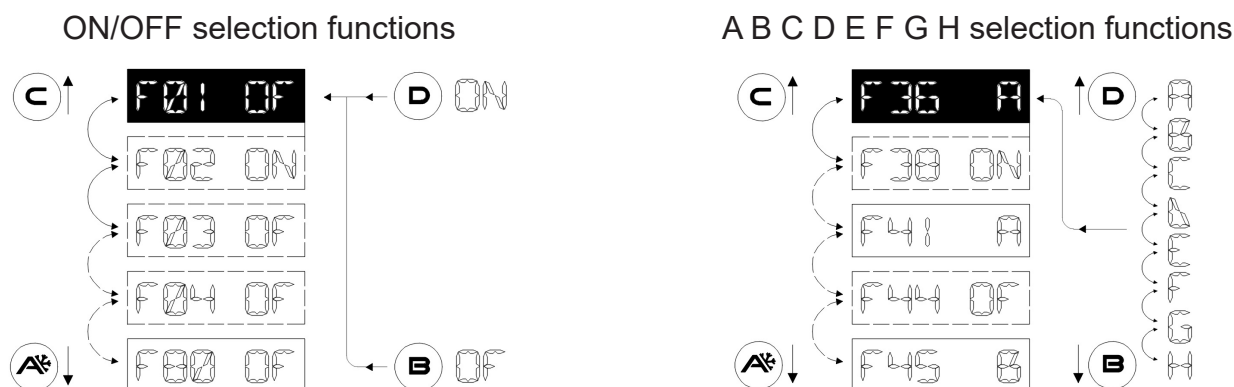
*As the Functions and Potentiometers are identical to those of the ET-DSEL digital selectors and their meaning has already been described in detail in the Installation Manual of the automation, please refer to the FUNCTIONS and POTENTIOMETERS tables of the automation Manual for information about their meaning.*

When you access this menu, the first screen displays the following text:

F---P

From this position, which shall be referred to as ZERO Position, repeatedly press the B button (or hold it pressed to fast-forward) to select the functions from the first (F01) to the last (F80); to return to the first function, repeatedly press (or hold pressed) the A button.

To change the selected function state, press the B button to disable it (OFF) or the D button to enable it (ON). Some functions (multiple) have values ranging between A and H; select the desired value using the A and B buttons.



To access the potentiometers return to the “ZERO Position” (F--P)

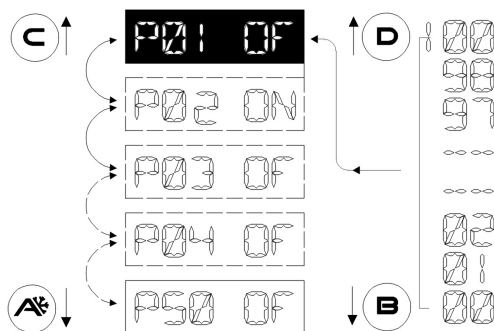


### Warning!

*If you hold the A button pressed to return to the “ZERO Position”, the scrolling shall automatically stop once the “ZERO Position” has been reached*

Repeatedly press the A button (or hold it pressed to fast-forward) to select the Potentiometers from the first (P01) to the last (P50); to return to the first Potentiometer repeatedly press (or hold pressed) the B button.

To change the value of the selected potentiometer press the B button (-) to decrease it or the D button (+) to increase it.



*The automation software updates the parameters when it reaches the opening or closing limit switch; as a consequence, you need to wait for the door to open or close fully to actually observe the effect of the edits made through the selector. The microprocessor managing these edits features a buffer; this allows to simultaneously change multiple parameters without the relevant update being lost.*

After editing the desired parameters, press SET to exit the menu and return to the main page of the technical area.

To exit the technical area and return to the main screen, press SET again.

### 3-SELECTOR OPTION

This menu allows to customise the T-NFC selector.

As mentioned in the “DAY-TO-DAY USE” paragraph, it allows to select 6 different operating programs, to enable a reduced opening during winter and to activate a set of special functions through the C button. In a simple installation, these choices are often unnecessary and could confuse the end user. For this reason the undesired operating programs and the buttons associated with special functions can be filtered out on the selector.

When the menu is accessed, the first customisable parameter is displayed:

#### The AUTO operating program

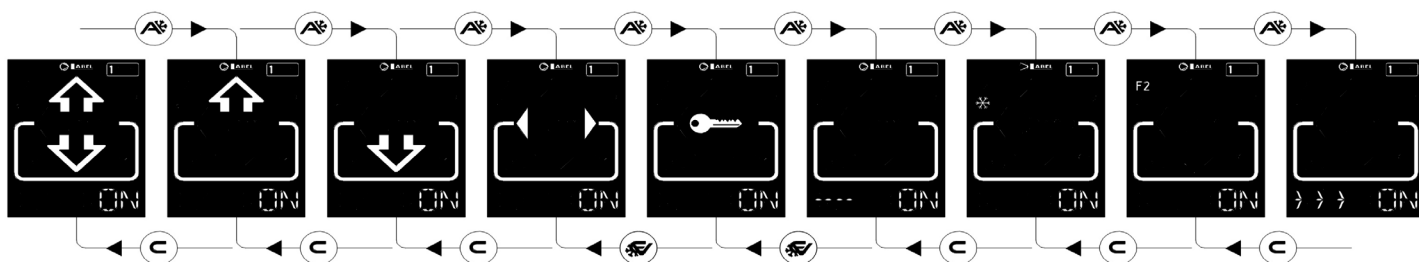
The current state of this parameter is displayed in the right section of the alphanumeric character line:

**ON** = enabled

**OFF**= disabled

To change the parameter state, press the B button to disable it (OFF) or the D button to enable it (ON).

To move to the next customisable parameter, press the A button; to return to the previous customisable parameter, press the B button.



The customisable parameter sequence is the following:

- AUTO operating program
- EXIT operating program
- ENTER operating program
- OPEN operating program
- LOCK operating program
- OFF operating program
- A function button (winter reduced opening)
- C function button (F2 special functions)

The last customisable parameter, finally, is:

- Selector activation with “**SLIDE**” (>>>)

This function allows to activate the selector, when it is in screen saver mode, by just swiping with a finger from left to right in the bottom section of the digital selector, near the A-SET-B buttons. Although not an actual password (which anyway can be set as described in the paragraph “USER PASSWORD MANAGEMENT”), it still allows to ensure that the operating program adjustment menu can only be accessed if one is aware of this option.



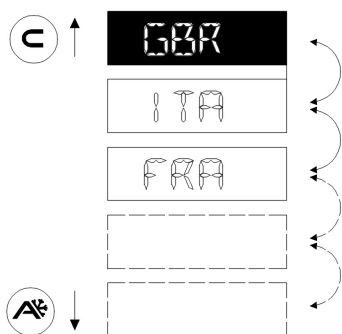
### Warning!

*The operating programs whose state is OFF shall no longer be displayed, but the selection will switch to the first available program whose state is ON; accordingly, the A(\*) and C(F2) buttons shall have no effect if their state is set to OFF.*

After setting the customisation options, press the SET button to return to the main page of the technical area.

To exit the technical area and return to the main screen, press SET again.

## 4-LANGUAGE



This menu allows to select the language for the operating program description.

Scroll the available languages using the A (down) or C (up) buttons until you find the desired one. Then press the SET button to confirm and exit this menu.

## 5-CONNECTION

This menu allows to repeat the automatic detection of the doors existing on the serial communication line (up to 2), whose data shall be stored in the processor. During this step the “WAIT” message will be displayed on the alphanumeric character line. Wait for this step to be completed before you touch any button.

If the operation has been successfully completed the selector will display on the alphanumeric character line the saved operating program for the door, along with its text, in the desired language.

## 6-PASSWORD

This menu allows you to change the technical password, provided you know the one currently in use.

### Important!



*The technical password is stored in the microprocessor controlling the automatic door; as a consequence, it is independent of the selector in use. Once it has been stored, in order to access the door with any type of programmer (T-NFC, ET-DSEL, LabelTools App), you will have to know its encoding.*

The first message to be displayed shall be:

Type the new password.

The next screen shall be:

“Type the new password again.”

If the 2 passwords match, after briefly displaying the “WAIT” message the selector will switch to the main page of the technical area.

To exit the technical area and return to the main screen, press SET again.

## 7-SERVICE

This menu, mainly used during maintenance, allows to reset some door parameters.

The following is a list of the available parameters.



To switch between the different parameters, repeatedly press the B button. After selecting the parameter to be used, press the A button to activate one of the actions described below.

- |                      |   |
|----------------------|---|
| <b>ERROR RESET</b>   | It erases the event memory of the door containing the error messages.   |
| <b>COUNTER RESET</b> | It resets the door partial counter.   |
| <b>GENERAL RESET</b> | It resets all the parameters to the default values; you shall then have to launch a full door setup.  |
| <b>PLUG AND PLAY</b> | This function allows, after setting at the factory all the door operating parameters (Functions and Potentiometers), to install them by just pressing the button located on the electronic control unit of the automation. The door shall only set up the sliding stroke, then it shall be ready to use right away. |

Press the SET button to return to the main page of the technical area.

To exit the technical area and return to the main screen, press SET again.



**T-NFC**  
Made in Italy  
by



Via Ilariuzzi, 17/A - S. Pancrazio P.se - 43126 PARMA - ITALIA  
Tel. (+39) 05 21/ 67 52 - Fax (+39) 05 21/ 67 52 22  
infocom@labelspa.it - [www.labelspa.com](http://www.labelspa.com)

