



# INNOVATION IS AN OPEN DOOR

SOLUTIONS FOR  
AUTOMATIC DOORS



# OPENING DOORS FOR A BETTER LIFE



The solutions for **LABEL AUTOMATIC DOORS** are a comprehensive and modular answer for those who wish to install high-quality **sliding or swing** automatic doors.

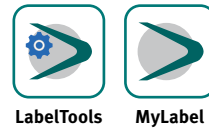
The automations and finished entrances meet the most varied design requirements for areas with high or low pedestrian flow rates: hotels, shops, malls, recreational sites, museums, public spaces, offices, clinics, hospitals, houses, cruise ships and yachts.

The reliability of automations, the quality of materials and the effectiveness of the after-sale service are the reasons why **LABEL®** is now an established brand in over 50 countries all over the world.

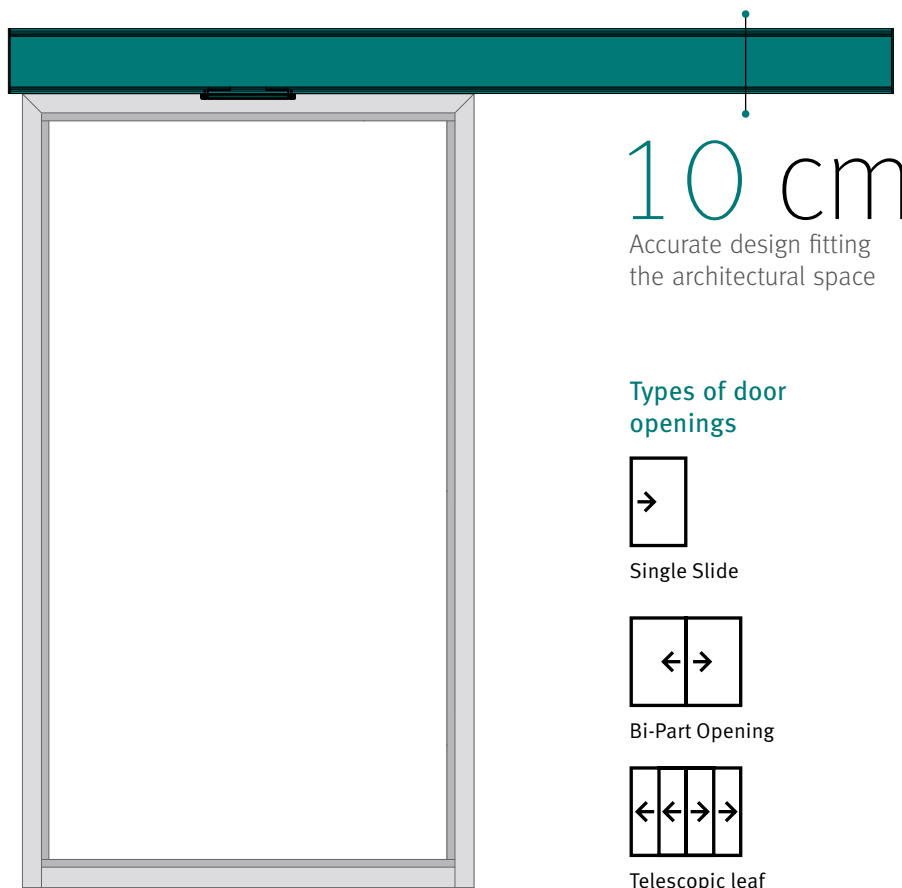


# ETERNA SERIES

## design and functionality



**LABEL ETERNA** is a comprehensive range of automations designed to control the closing and opening of **sliding doors with leaves weighing between 90 kg and 200 kg**. Safety, elegance, quietness, smooth movement and simple installation make these automations suitable for all types of environments, such as malls, public and private offices, shops, airports and stations, coffee bars, restaurants, and health facilities.



6 W

stand-by energy consumption

0.26/0.32kWh

consumption for 1500 cycles/day, with clear opening ranging between 1400 mm and 2400 mm and leaves weighing between 70+70 kg and 150+150 kg



FOR  
OUTDOOR



FOR INDOOR



ENERGY  
SAVING  
FUNCTION



**LABEL** provides a wide and comprehensive range of catalogue components and a broad selection of complete doors covering the most varied access types.

**SAFETY AND RESPECT FOR OUR PLANET ARE PARAMOUNT TO US**

EN 16005; EN 13849-1; EN 13849 -2; EN 61000-6-2; EN 61000-6-3; EN 60335-2-103; DIN 18650-1; DIN 18650-2



ANSI/CAN/UL325



EN16005

# ETERNA SERIES

| 70 | 90 | 150 | 200 | 300T |

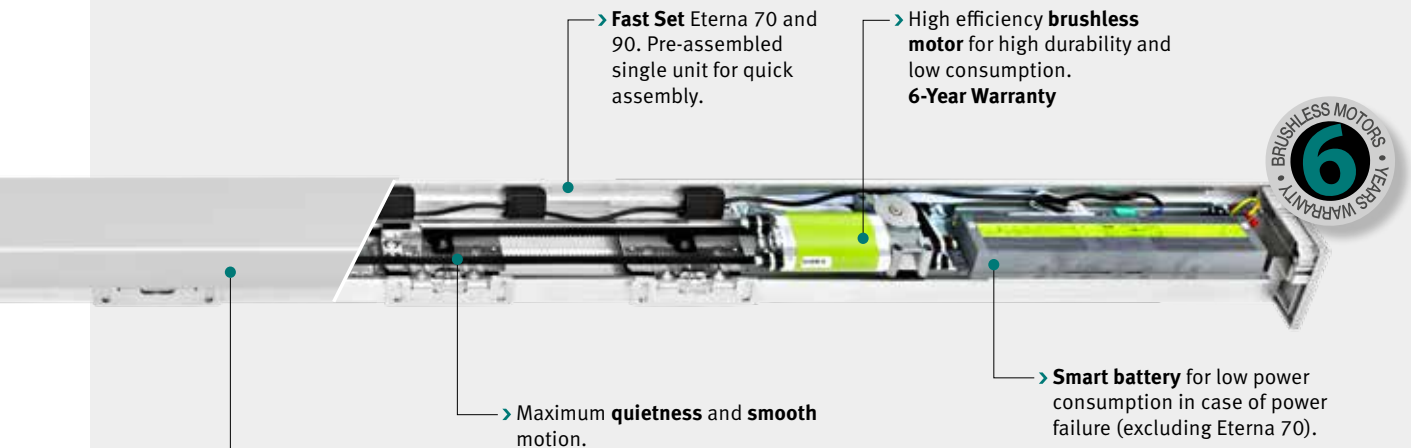
## LOW ENERGY CONSUMPTION GREEN POWER AUTOMATIONS

### PRODUCT DESCRIPTION

The ETERNA automations, available in **5 models**, are equipped with a brushless motor coming with a 6-year warranty, ensuring high reliability and a long useful life, thanks to the absence of brushes. In the brushless motor, switching is entirely digital; this allows higher and smoother accelerations and speeds to be achieved, compared with traditional motors.

They are designed with high-efficiency switching power supplies, ensuring extremely low power consumptions and unparalleled efficiency.

The brand-new T-NFC panel allows users to quickly set all parameters and to control the automation both through the touch display and using the Label apps.



#### Models:

- > **Eterna 70 and 90** for 70 to 130 Kg sliding doors
- > **Eterna 150 and 200** for 150 to 300 Kg sliding doors
- > **Eterna 300T** for 2-leaf and 4-leaf telescopic sliding doors



**Energy Saving function**, reducing energy consumption of buildings.



**Anti-roll option for boats** (excluding Eterna 70).



**Pharmacy function** for reduced door opening = just a few centimetres (Eterna 150 and 200).

## COMPATIBLE WITH MYLABEL AND LABELTOOLS APPS, THROUGH THE NEW T-NFC.



LabelTools

LabelTools allows you to quickly program each automation, by setting the commands directly from your cellphone



UPLOAD/DOWNLOAD THE DATA FROM/TO THE CONTROL UNIT THROUGH THE BRAND-NEW T-NFC KEYBOARD



MyLabel

MyLabel keeps you constantly in touch with your customers:

- manage the support requests;
- plan maintenance travels
- remotely monitor and edit many access parameters



## 1. TECHNICAL SPECIFICATIONS

Automation	ETERNA Sliding and Telescopic
Loading capacity Single leaf	90 / 300 kg
Loading capacity Double leaf	70 / 200 kg
Clear passage	700 / 4000 mm
Brushless Motor	✓
Automation dimensions (HxDxL)	100x135 mm x L. (max. 6500 mm) / 120x210 mm x L. (max. 6500 mm)
Protection class	IP22
Breakout System for Emergency Exit	✓
Number of cycles	4000/day (2 million operations)
Contactless sensor	✓
Privacy kit	✓
LabelTools APP	✓
Colour	RAL
Certifications EN16005 - ANSI/CAN UL325 - EAC - TUV SUD	

Range performance summary table

## 2. MATCHING PROFILES

The Eterna automation range can be combined with the different aluminium Label profiles for doors.

For the Eterna 70 and 90 automations we recommend the LB18 and LB35 profiles.

Eterna automations can also be installed on doors with third-party profiles and leaves.



Profile LB18



Profile LB35

## 3. OPTIONAL

- › Breakout (except for Eterna 70)
- › Fail Secure / Fail Safe electric lock
- › Electric toggle lock (except for Eterna 70)
- › Emergency batteries
- › Relay module for additional functions (except for Eterna 70)

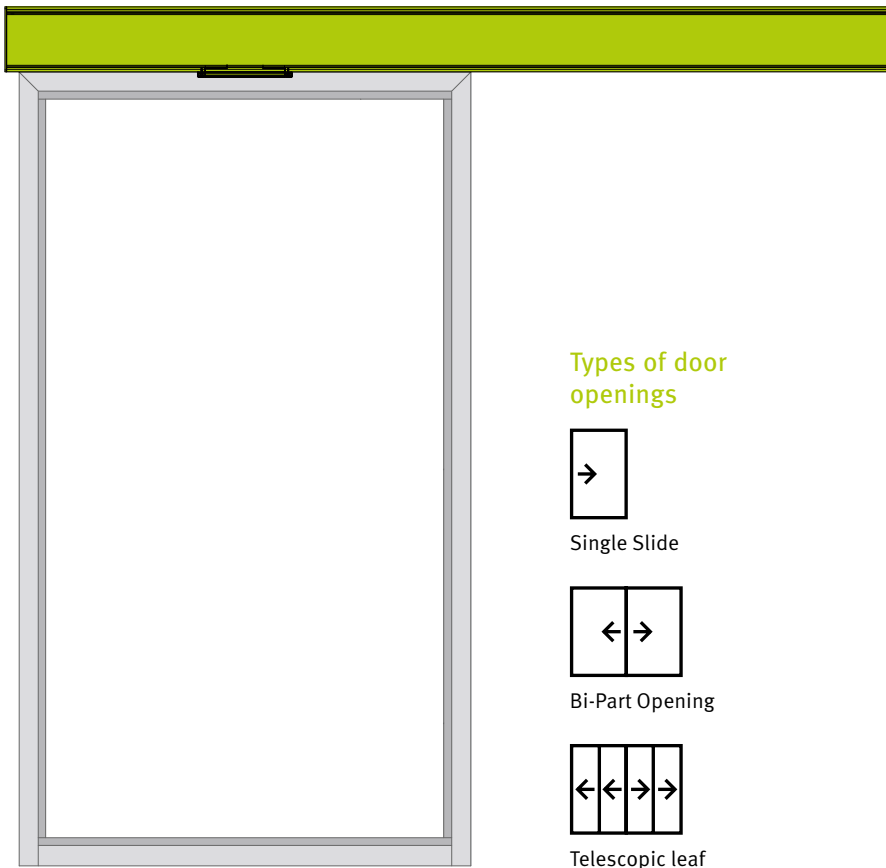
- › Activation and safety sensors
- › Touchless wall sensor.
- › OT-3S Elbow button.
- › Key selector.
- › Emergency mushroom button.
- › Activation button for emergency exits.
- › Microwave opening radar.
- › Anodized aluminium keypads.
- › Red/green signaling light to signal door state.
- › Remote controls, emergency batteries, and signal relays.
- › Privacy kit.

# REVOLUS SERIES

safe and reliable

**LABEL REVOLUS** is the range of automations designed to be **installed in escape routes**, adopting innovative technical solutions that provide safety, reliability and user-friendliness.

**The redundant system for the emergency opening** of the automatic door consists of a double brushless motor, coupled in a single enclosure, that provides greater reliability compared with the use of two separate motors.



6 W

stand-by energy consumption

0.26/0.32kWh

consumption for 1500 cycles/day, with clear opening ranging between 1400 mm and 2400 mm and leaves weighing between 90+90 kg and 150+150 kg





FOR  
OUTDOOR



FOR INDOOR



FOR HEAVY  
DUTY



FOR ESCAPE  
ROUTES



The automation complies with all the requirements provided for by standard **EN 16005**, having successfully passed all the tests prescribed for the doors installed in escape routes and emergency exits.

**SAFETY AND RESPECT FOR OUR PLANET ARE PARAMOUNT TO US**

Machinery Directive: 2006/42 EC  
Electromagnetic Compatibility Directive: EMC 2014/30/EU  
Low Voltage Directive: LVD 2014/35/EU  
TÜV SÜD Quality Certification: certificate no. G623



EN16005

# REVOLUS SERIES

| 90 | 150 | T |

## REDUNDANT AUTOMATION FOR SLIDING DOORS

### PRODUCT DESCRIPTION

An automation available in 3 models, designed to be installed in **escape routes** and manufactured adopting innovative technical solutions that provide safety, reliability and ease of installation.

The **redundant system** ensures that in the event of a failure of a component of the main part of the automation, the secondary part intervenes to carry out the emergency opening of the automatic door.

The electronic control unit is extremely compact and manufactured with latest-generation, highly reliable components.

The system uses a monitored lead battery to ensure that, should a failure occur, the **door opens within 5 seconds** in emergency mode.

The **R-DSEL digital selector** is a tool used by the installer to configure the automatic door operating parameters and by the user to select the door work program.

#### Models:

- > **Revolus 90** for sliding doors with 1 or 2 leaves (maximum capacity per leaf 90-130 Kg)
- > **Revolus 150** for sliding doors with 1 or 2 leaves (maximum capacity per leaf 150-200 Kg)
- > **Revolus-T** for telescopic doors with 2 or 4 leaves (maximum capacity per leaf 75-150 kg)



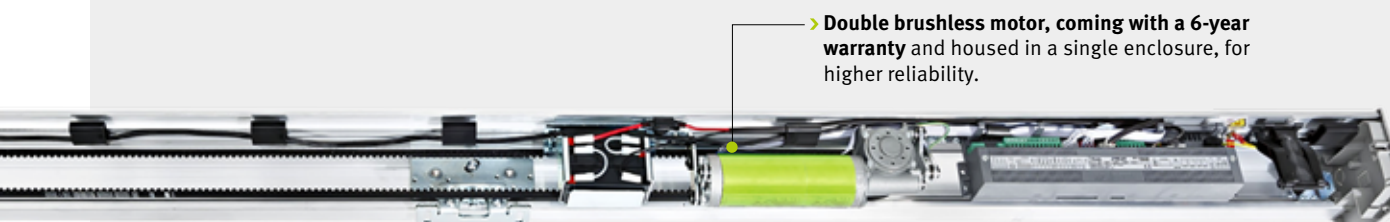
Designed to be installed in escape routes.



Reduced opening function during winter.

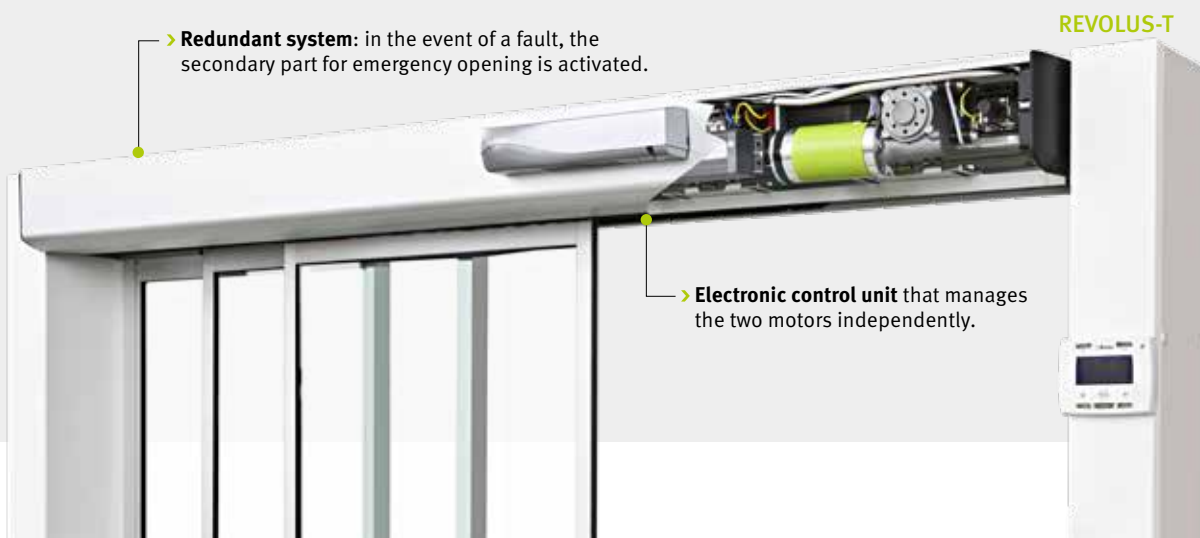


REVOLUS 90



- > **Double brushless motor, coming with a 6-year warranty** and housed in a single enclosure, for higher reliability.

REVOLUS 150



- > **Redundant system:** in the event of a fault, the secondary part for emergency opening is activated.

- > **Electronic control unit** that manages the two motors independently.

REVOLUS-T



## 1. TECHNICAL SPECIFICATIONS

Automation	ETERNA Sliding and Telescopic
Loading capacity Single leaf	130 / 200 kg
Loading capacity Double leaf	90 / 150 kg
Clear passage	700 / 4000 mm
Automation dimensions (HxDxL)	100x135 mm x L. (max. 6500 mm) / 120x210 mm x L. (max. 6500 mm)
Brushless Motor	✓
Protection class	IP22
For escape routes	✓
Number of cycles	4000/day (1 million operations)
Double Input for internal radars	✓
Emergency battery	✓
R-DSEL digital selector	✓
Colour	RAL
Certifications EN16005 - EAC - TUV	

Range performance summary table

## 2. MATCHING PROFILES

You can order a finished door with the Revolus automation you prefer, in the cut and machined or assembled version.

For those who wish to set up the door themselves, Label provides a wide range of EN AW-6060 aluminium alloy profiles, complying with the UNI EN 573 standards. They are designed to last, and made of a material featuring a low environmental impact, strong and resistant to the most varied weather conditions, even extreme.



Profile LB46



Profile LB50

## 3. OPTIONAL

- > **R-WK Module to open** the door from outside in case of blackout.
- > **UR24 Relay module** for additional functions.

- > **Electric lock.**
- > **Emergency opening button.**

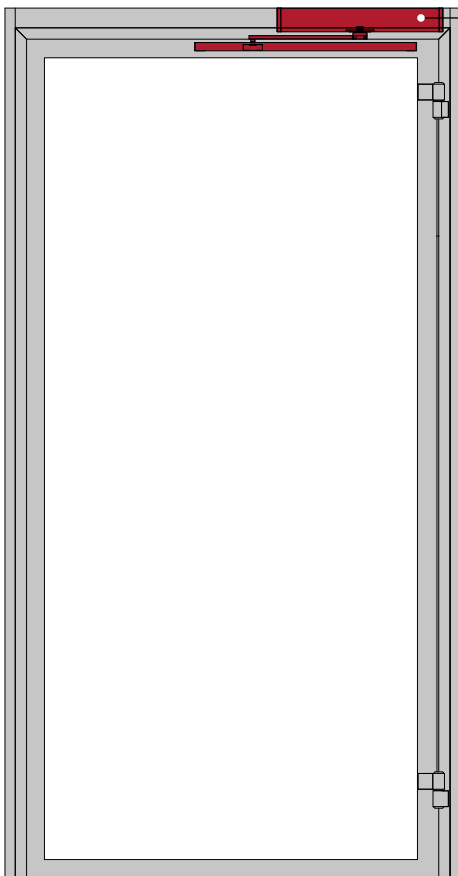
- > Monitored Activation and Safety **Sensors**
- > Key **selector.**
- > Anodized aluminium **keypads.**

- > Red/green **signaling light** to signal door state.
- > **Remote controls.**

# NEXT SERIES

elegant and versatile

The **LABEL NEXT** automation is designed to control the opening and closing of swing doors, where safety, quietness, and fluidity of motion are essential requirements.



6 cm

Ultra-compact architectural automation for swing doors (mounted on transom).



LabelTools

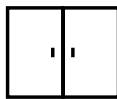


MyLabel

## Types of door openings



Single Slide



Bi-Part Opening



Double asymmetric leaf



5 W

stand-by energy consumption

## Low Energy function

Slow speed movement in order to reduce the force and the door kinetic energy according the EN16005 requirements.



FOR  
OUTDOOR



FOR INDOOR



ENERGY  
SAVING  
FUNCTION



**SAFETY AND RESPECT FOR OUR PLANET ARE PARAMOUNT TO US**

- › Electromagnetic compatibility directive EMC 2014/30/EU
- › Standard EN 61000-6-2 / EN 61000-6-3
- › Low voltage directive LVD 2014/35/EU
- › Standard EN 60335-2-103
- › Machinery Directive 2006/42/EC
- › Standard EN 13849-1 / EN 13849-2 / Category=2, PL=d
- › EN 16005
- › Standard ANSI/CAN/UL325
- › EN1634 (test report WF436685 for NEXT 120S)
- › DIN 18650-1; DIN 18650-2



ANSI/CAN/UL325

EN16005

# NEXT SERIES

| 75 | 120S | 150 |

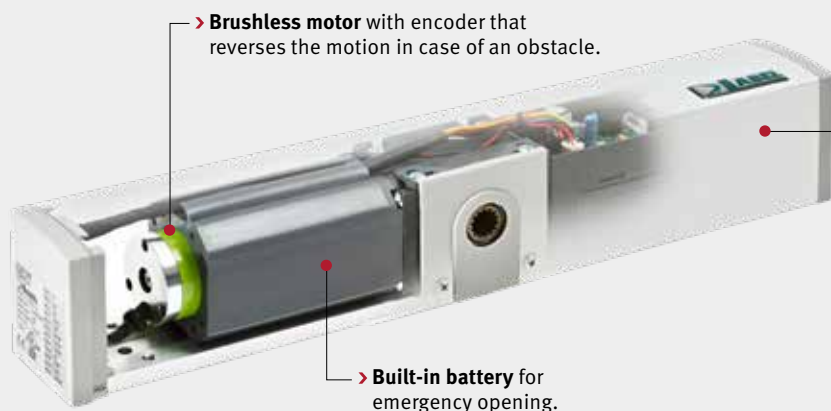
## AUTOMATION FOR SWING DOORS

### PRODUCT DESCRIPTION

**LABEL NEXT** is designed to control the opening and closing of swing doors, where safety, quietness, and fluidity of motion are essential requirements.

Thanks to their great versatility, these automations are ideal for shops, public and private offices, hospitals, nursing homes, surgeries, hotels, coffee bars, and restaurants.

The automation system, which can operate swing doors weighing up to 150 Kg and with a leaf width of 1,000/1,500 mm, is equipped with a brushless motor fitted with an encoder, that further reduces consumptions, minimising wear and maximising durability.



> **Brushless motor** with encoder that reverses the motion in case of an obstacle.

> **Built-in battery** for emergency opening.

### Models:

- > **Next 75** for indoor swing doors with **motor-powered closure**
- > **Next 120S** for swing doors with **closing spring**
- > **Next 150** for swing doors with **motor-powered closure**.



> **Ultra-thin arms in the following versions:**  
- sliding arm (pull or push type);  
- elbow arm (pull type);  
- articulated arm (push type).

> **Safety sensor**

> **T-NFC** digital selector

> **T-LESS** touchless sensor



## 1. TECHNICAL SPECIFICATIONS

Automation	NEXT Swing-type
Loading capacity Single leaf	75 / 150 kg
Loading capacity Double leaf	75 / 150 kg (x2)
Automation dimensions (WxHxD)	420x60x76 mm / 520x60x76 mm
Automation weight	3.1 / 8 kg
Clear passage	600 / 1500 mm
Brushless Motor	✓
Protection class	IP32
For escape routes	✓
Number of cycles	4000/day (2 million operations)
Privacy function	✓
LabelTools APP	✓
Colour	RAL

Certifications EN16005 - ANSI/CAN UL 325 - EAC - TUV (for NEXT 75, pending for all other models).

*Range performance summary table*

## 2. ARMS

The NEXT series arms are sleek, elegant but strong, and the multiple available types cover a wide range of opening methods.



## 3. OPTIONAL

- > **Emergency batteries**
- > **Radioreceiver** for door opening
- > **Electromagnet/electric strike**

- > **Red/green signaling light** to signal door state
- > **Privacy kits** for offices and toilettes

- > Activation and safety **sensors**.
- > Touchless wall **sensor**.
- > OT-3S **Elbow button**.
- > Key **selector**.
- > Microwave opening **radar**.

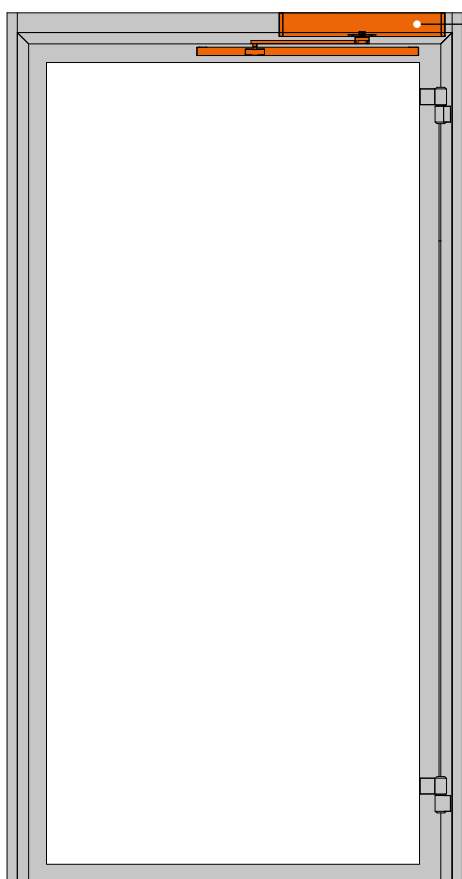
- > Anodized aluminium **keypads**.
- > Red/green **signaling light** to signal door state.
- > **Remote controls** and signal relays.

# NEPTIS PLUS SERIES:

## efficiency and low consumptions

The **NEPTIS PLUS** automation system is perfect for outdoor and indoor use. The automation is equipped with high-efficiency switching power supplies, ensuring extremely low power consumption.

The **NEPTIS PLUS INVERS** model is equipped with a swing-operated opening system, for the extraction of smoke in case of fire or blackout.



### Breaking down architectural barriers

Adjustable pause time for disabled people, 0.5 to 60 seconds



LabelTools



MyLabel

### Types of door openings



Single Slide



Bi-Part Opening



## 6 W

stand-by energy consumption

## Low Energy function

Slow speed movement in order to reduce the force and the door kinetic energy according the EN16005 requirements.





FOR  
OUTDOOR



FOR INDOOR



NO  
ARCHITECTURAL  
BARRIERS



ENERGY  
SAVING  
FUNCTION



EXTRACTION  
OF SMOKE

**SAFETY AND RESPECT FOR OUR PLANET ARE PARAMOUNT TO US**

- › Electromagnetic Compatibility Directive: EMC 2014/30/UE
- › Standard EN 61000-6-2 / EN 61000-6-3
- › Low voltage directive LVD 2014/35/EU
- › Standard EN 60335-2-103
- › Machinery Directive 2006/42/EC
- › Standard EN 13849-1 / EN 13849-2
- › Category=2, PL=d
- › EN 16005
- › ANSI/CAN/UL325: File E520015



ANSI/CAN/UL325

EN16005

# NEPTIS PLUS SERIES:

| NB-LET | NB-SLT | NB-LETB | NB-SLTB | NB-SLP | NB-SMT  
| NB-SMTB | NB-SMP | NB-INVERS | NB-INVERSB |

## AUTOMATION FOR SWING DOORS

### PRODUCT DESCRIPTION

The new **NEPTIS PLUS** automation family is an upgrade of a Label best-seller.

Powerful and reliable, it is designed to optimise the energy use and ensure minimal consumptions and a long useful life even in case of challenging weather conditions and heavy duty.

**Models for two-leaf door are equipped with a single casing** tailor-cut to provide an excellent look meeting the requirements of the most demanding designers.

The opening and closing force and speed can be adjusted to ensure an excellent user experience.

The low energy function reduces the movement speed according to EN16005 and can be adjusted through the digital selector.

### Models:

> Neptis Plus for swing doors with **spring-powered closure**:  
**NB-LET, NB-SLT, NB-LETB, NB-SLTB, NB-SLP**

> Neptis Plus for swing doors with **motor-powered closure**  
**NB-SMT, NB-SMTB, NB-SMP**

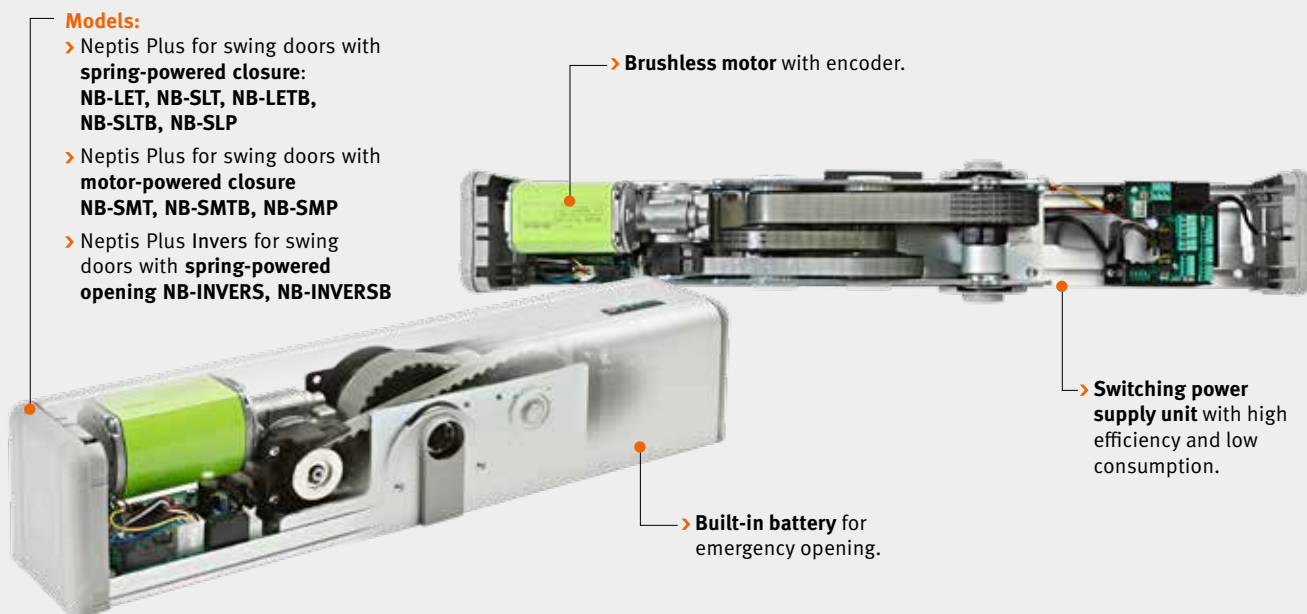
> Neptis Plus Invers for swing doors with **spring-powered opening** **NB-INVERS, NB-INVERSB**

> **Brushless motor** with encoder.

> **Switching power supply unit** with high efficiency and low consumption.

> **Built-in battery** for emergency opening.

> **Also suitable for frameless leaves.**





## 1. TECHNICAL SPECIFICATIONS

Automation	NEPTIS PLUS Swing-type
Loading capacity Single leaf	120 / 300 kg
Loading capacity Double leaf	120 / 300 kg (x2)
Automation dimensions (WxHxD)	550x110x120 mm / 730x110x120 mm
Automation weight	9.5 kg / 11 kg
Clear passage	600 / 1500 mm
Brushless Motor	✓
Protection class	IP31
For escape routes	✓
Number of cycles	4000/day (1 million operations)
Built-In battery pack included in models: NB-LETB, NB-SLTB, NB-SMTB, NB-INVERSB	✓
Privacy function	✓
LabelTools APP	✓
Colour	RAL
Certifications EN16005 - ANSI/CAN UL 325 - EAC - TUV	

Range performance summary table



## 2. ARMS

The NEPTIS PLUS arms are designed to withstand significant stresses without compromising on design.

## 3. OPTIONAL

- › **Emergency batteries**
- › **Radioreceiver** for door opening
- › **Monitored Safety Sensors.**
- › **Touchless wall sensor.**
- › **OT-3S Elbow button.**
- › **Key selector.**
- › **Microwave opening radar.**
- › **Electromagnet/electric strike**
- › **Anodized aluminium keypads.**
- › **Red/green signaling** light to signal door state.
- › **Remote controls** and signal relays.



ET-DSEL selector



T-NFC: digital selector compatible with the apps LabelTools and MyLabel

T-LESS: contactless sensor with LED indicating the door state



FLATSCAN: Sensor for complete protection of the door movement area

# PROFILES FOR DOORS

quality is in details

LBFL | LBFL Plus | LB18  
LB35 | LB46 | LB50  
LB50 Breakout

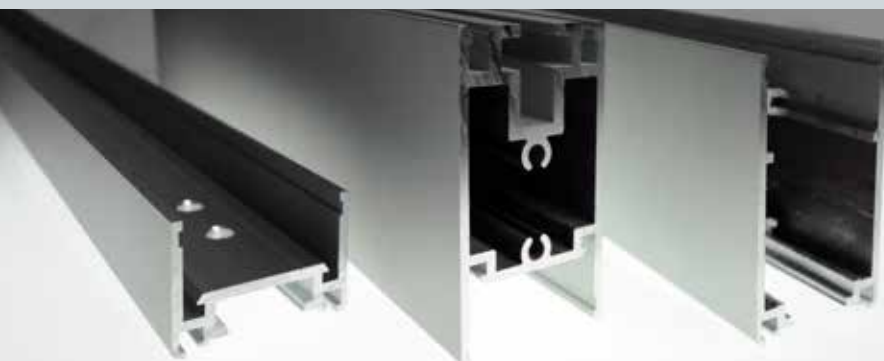
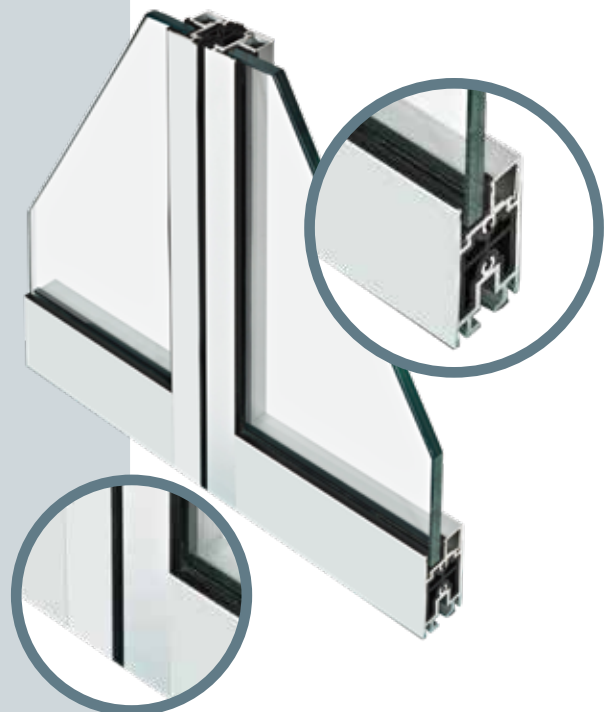
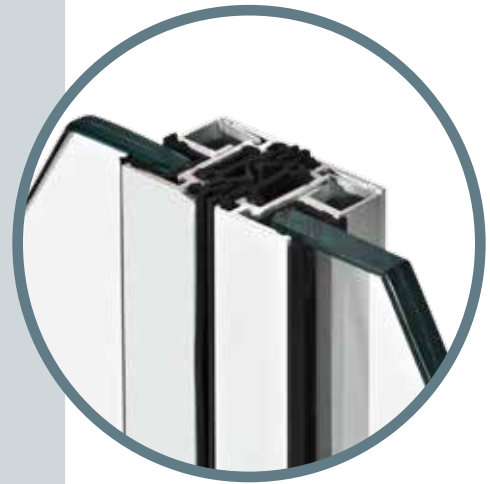
**THE LABEL ALUMINIUM PROFILES** are made of EN AW-6060 aluminium alloy, in accordance with Standard UNI EN 573. They are designed to last, and made of a material featuring a low environmental impact, strong and resistant to the most varied weather conditions, even extreme.

The flawless profile cut allows perfect junctions that enhance and simplify your work, whether you choose to use catalogue components or finished doors.

**STANDARD OR CUSTOM FINISHES** to meet any customer request or specification requirement: profiles are supplied raw or with an anodized silver finish; you can request Standard RAL paintings, or Special sample-based RAL paintings.

## A RANGEMEETING ALL DIFFERENT REQUIREMENTS

as to capacity and finish: from frameless doors to the heavy-duty doors for malls and places with high pedestrian flow rates



**Finishes:**

**profiles and casings**

- > stainless steel-like
- > silver
- > RAL colours

**Panels:**

- > RAL painting, stainless steel plate
- > Digital printing (HPL)

**Glazing:**

- > **Laminated safety glass**  
EN ISO 12543.
- > **Thermally toughened safety glass** EN 12150.
- > **Insulating glass**  
EN 1279 from 33.2 to 55.2.
- > Glass **milk white**
- > **Digital printing, screen printing**
- > **Smart-Glass**  
(transparent/opaque function)

**Profiles:**

- > **Extruded profiles** in EN AW-6060 aluminium alloy in compliance with the Standard UNI EN 573.
- > **T5 or T6 finish** according to Standard UNI EN 515.
- > **Dimensional tolerances** and thicknesses according to the standard UNI EN 12020.2 and/or UNI EN 755-9.
- > **Flush system** with fixed and opening leaves having a section of 18 mm.
- > **Slim standard profile;** optional with oversize spacer suitable to install the lock.
- > **Coupling with 90° cuts** without profile butting.
- > **Extruded gaskets** according to specifications in EPDM.
- > Snap-in glazing insertion, **inner and outer border gasket.**

# LABEL FINISHED ENTRANCES

ready-to-install  
quality



**THE LABEL FINISHED ENTRANCES** are produced with top-quality profiles and components, and are available for multiple door types.

**WIDE RANGE OF PROFILES** for the different leaf types:

- **LB18** - for indoor use or environments where minimal footprint is required;
- **LB35** - for sleek and strong doors, featuring high resistance to shock and heavy-duty
- **LB46** - a lightweight and elegant system for temperature reduction and noise abatement;
- **LB50** - for contexts requiring extreme solidity.

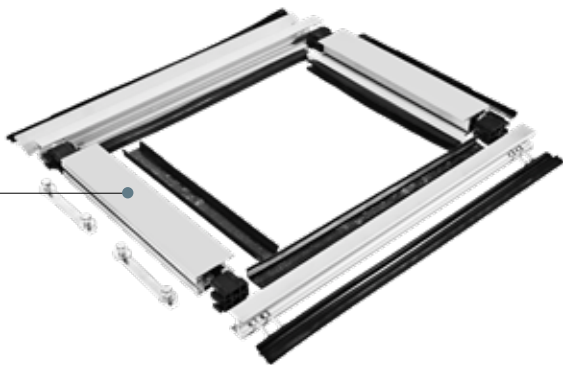
**MANUAL OR AUTOMATIC DOORS;** finished entrances can be complete with an **Eterna series** or **Revolus series sliding automation**, or with a **Next series** or **Neptis Plus series swing automation**.

**THE CHOICE IS YOURS:** the Label finished entrances are available in cut and machined or assembled versions.



**SOLUTION ASSEMBLED DOOR**

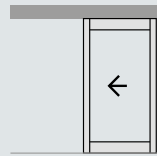
THE DOOR IS SUPPLIED ASSEMBLED, AFTER BEING PREPARED ACCORDING TO THE SPECIFICATIONS LISTED IN THE ORDER. THE ASSEMBLED DOOR IS COMPLETE WITH PROFILES, GASKETS, AND ACCESSORIES NECESSARY FOR GLAZING AND INSTALLATION.



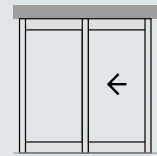
**SOLUTION CUT AND MACHINED DOOR**

THE CUT AND MACHINED DOOR IS SUPPLIED IN AN ASSEMBLY KIT, CUT AND MACHINED TO SIZE ACCORDING TO THE SPECIFICATIONS GIVEN AT THE TIME OF THE ORDER. THE KIT INCLUDES PROFILES, SEALS, AND ACCESSORIES NECESSARY FOR ASSEMBLY, GLAZING AND INSTALLATION.

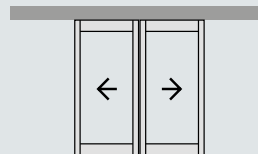
## 1. SLIDING DOOR OPENING TYPES



Single Slide



Single Slide with side screen

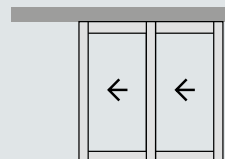


Bi-Part Opening

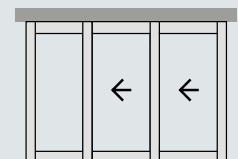


Bi-Part Opening with side screen

## 2. TELESCOPIC DOOR OPENING TYPES



Single Slide 2-panel



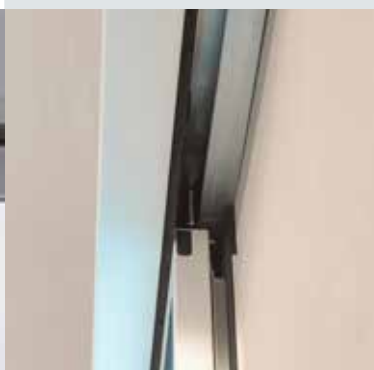
Bi-Part Opening with side screen 3-panel



Bi-Part Opening 4-panel



Bi-Part Opening with side screen 6-panel





# WE HAVE BEEN ENVIRONMENTALLY FRIENDLY FROM THE START

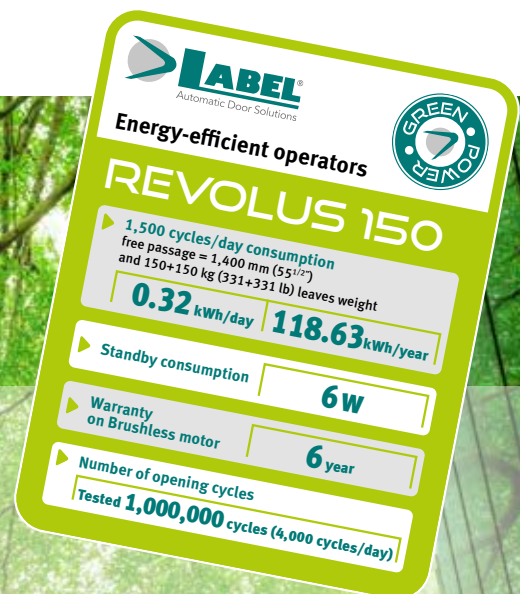
and we want to open the door to a sustainable future

At Label we constantly develop new solutions to improve the energy performance of our products; today **ALL LABEL AUTOMATIONS HAVE LOW ENERGY CONSUMPTIONS**, and they provide some of the best environmental performances in the market.

The Eterna automations feature an **ENERGY SAVING FUNCTION** that decreases the energy consumption of the building.

When this option is active, as soon as the sensor detects that the person has transited it stops the door opening action and starts the closing one, minimising heat loss.

To us, being Green is a value, that's why we affix on each automation a label certifying its energy efficiency.



## WE ARE WHERE YOU ARE

> 50 countries  
we have an extensive network of distributors and installers

300,000 doors  
installed all over the world





# DESIGN YOUR SPACES

## with the Label door solutions

**THE TUV UNI-EN 9001:2015 CERTIFICATION** attests that Label pays great attention to the production, assembly and supply procedures: a further proof that you have chosen the right partner for optimum results.

**THE SUPPORTSERVICE FOR PROJECTS AND TENDERS** provides specialised technical support for calls for tenders and help with identifying the products that best meet the purchaser's needs, to increase competitiveness.

### LABEL BIM

More and more clients request complete BIM (Building Information Modeling) projects to be admitted to open competitive bidding.

The use of **BIM** conforms the design to international standards and facilitates the design phase, reducing significantly the margin of error and the design time.

The BIM provides AECOs (architects, engineers, contractors and owners/managers) with the right tools for more efficient, faster and more environmentally friendly building.



Access the Label BIM database.  
[www.bimobject.com/it/label](http://www.bimobject.com/it/label)



# INNOVATION IS AN OPEN DOOR

THE RELIABILITY OF AUTOMATIONS AND THE EFFECTIVENESS OF THE AFTER-SALE SERVICE ARE THE REASONS WHY LABEL IS NOW USED BY INSTALLERS IN OVER 50 COUNTRIES ALL OVER THE WORLD.

Discover other Label installations



## Some places where Label doors are used every day

AIRPORTS  
RAILWAY STATIONS**CROATIA - Pola**

Pula International Airport

**THAILAND - Bangkok**

Don Mueang International Airport

**ITALY - Reggio Emilia**

High speed station

SHOPPING MALLS  
SHOPS**CHINA - Hong Kong**

CITIC Tower

**ITALY - Bergamo**

Coop supermarket

**ITALY - Carpenedolo (Brescia)**

Penny Market

**ITALY - Trento**

Conad supermarket

**ITALY - Curno (Bergamo)**

Mondo Convenienza

**ITALY - Milan**Commercial Center San Giuliano  
MilaneseHOSPITALS, NURSING  
AND REST HOMES  
HEALTH FACILITIES**SAUDI ARABIA - Al Khobar**

Medical Center - Al Khobar

**SAUDI ARABIA - Riad**

Prince Medica Sultan

**BELGIUM**

Pantheon Clinic Diest

**EAU - Abu Dhabi**

Gmc - Fujairah

**EAU - Abu Dhabi**

Ibin Sinha Hospital

**EAU - Ajman**

Gmc - Hospital

**EAU - Dubai**

Gynecology E Fertility Clinic

**EAU - Dubai**

Gmc - Dubai Main Block

**EAU - Dubai**

Medcare Hospital Sharjah

**EAU - Dubai**

Thumbay Hospital

**EAU - Dubai**

Zayed Military Hospital

**EAU - Dubai**

Zuleka Hospital

**ISRAEL Kiryat Atidim - Tel Aviv**

Raphael Hospital

**ISRAEL - Ramat Gan**

Naara Medical Center

**JORDAN - Amman**

Kmc Amman

**MOROCCO - Casablanca**

Jerrada Hospital

**MOROCCO - Marrakech**

Clinique L'aéroport Marrakech

**QATAR - Doha**

Mazaya Medical Trading Alsaad

**CZECH REPUBLIC - Kladno**

Kladno Hospital

**CZECH REPUBLIC - Melnik**

Hospital Polyclinic Melnik

**ROMANIA - Bucarest**

Fundeni Hospital

**ROMANIA - Bucarest**

Marie Curie Hospital

**ROMANIA - Cornu**

Swiss Caps

**ROMANIA - Iasi**

Cardiology Hospital Iasi

**ROMANIA - Iasi**

Oblu Hospital

**ROMANIA - Iasi**

Parhon Hospital

**ROMANIA - Suceava**

Suceava Emergency Hospital

**RUSSIA - San Pietroburgo**

Scandinavia Clinic

**SINGAPORE**

Sengkang General Hospital

**TRINIDAD & TOBAGO**

Fortin General Hospital

**HUNGARY - Budapest**

Duna Medical Center

**ZAMBIA - Lusaka**

Maina Soko Hospital

**ITALY - Arezzo**

Calcit Hospital

**ITALY - Baggiovara (Modena)**

Civil Hospital

**ITALY - Bolzano**

Reha Clinic

**ITALY - Bolzano**

Central Hospital

**ITALY - Brescia**

Poliambulanze

**ITALY - Cagliari**

Sant'Antonio Hospital

**ITALY - Firenze**

Santa Maria Annunziata Hospital

**ITALY - Genova**

Ospedale Policlinico San Martino

**ITALY - Latina**

Santa Maria Goretti Hospital

**ITALY - Milano**

San Raffaele Hospital

**ITALY - Olbia**

Private Clinic

**ITALY - Padova**

Veterinary University Animal Unit

**ITALY - Pavullo nel Frignano (MO)**

Hospital

**ITALY - Peschiera del Garda (VR)**

Pharmacy Antibacterial department

**ITALY - Pozzilli (Isernia)**

Neuromed Neurologic Institute

**ITALY - Roma**

Pertini Hospital

**ITALY - Roma**

San Camillo Hospital

**ITALY - Roma**

Umberto I° Hospital

**ITALY - Roma**

Policlinico Gemelli Private business

**ITALY - Roma**

Policlinico Gemelli Hysteroscopy

**ITALY - Varese**

Filippo del Ponte Hospital

**ITALY - Verduno (Cuneo)**

Alba Brà Hospital

**ITALY - Vicenza**

San Luca Medical Centre

**ITALY - Vicenza**

San Bortolo Hospital

AMUSEMENT PARKS  
SPORTS FACILITIES  
CINEMAS**SINGAPORE**

Ferris wheel

**ITALY - Firenze**

Cinema The Space

**ITALY - Milano**

Fair - EXPO 2015

PUBLIC AND PRIVATE  
OFFICES**AFGHANISTAN - Kabul**

Parliament Building



INNOVATION IS AN OPEN DOOR



LABEL S.p.A. Via Umberto Ilariuzzi 17/A - 43126 San Pancrazio Parmense (PARMA) Italy  
T. +39 0521 6752 - infocom@labelspa.it

[www.labelspa.com](http://www.labelspa.com)

